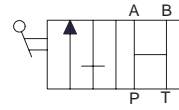


**MANUAL VALVES**

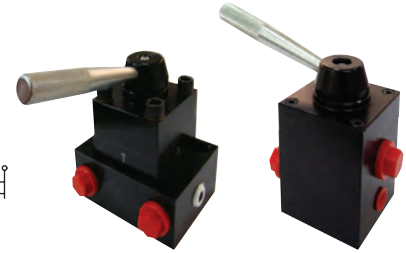
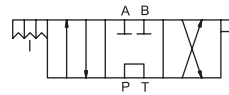
**Model: DVBB**

- 2 Way 2 Position for single acting applications
- Suits electric pump series PE026, PE075, PE090 & PE180
- Suits air pump series PA028



**Model: DVE1B**

- 4 Way 3 Position for single and double acting applications
- Tandem centre
- Suits electric pump series PED026, PED075, PED090 & PED180
- Suits air pump series PAD028
- For PHD2350 use model **DVE1A**
- For remote mounted valve order **DVE1C**

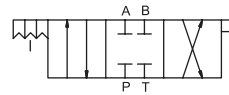


**DVE1B  
DVE2B**

**DVE1C**

**Model: DVE2B**

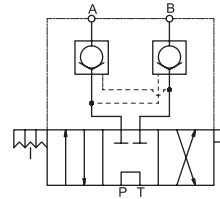
- 4 Way 3 Position for single and double acting applications
- Closed centre
- Suits electric pump series PEDC026, PEDC075, PEDC090 & PEDC180
- Suits air pump series PADC028



**DVF1B**

**Model: DVF1B**

- 4 Way 3 Position for single and double acting applications
- Tandem centre
- Built in pilot check valves for load holding
- Suits electric pump series PEDH026, PEDH075, PEDH090 & PEDH180
- Suits air pump series PADH028
- For remote mounted valve order **DVF1C**

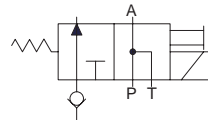


**DVGB**

**SOLENOID VALVES**

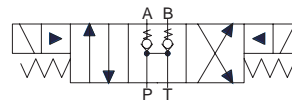
**Model: DVGB**

- 3 Way 2 Position for single acting applications
- Suits electric pump series PES026, PES075, PES090 & PES180



**Model: DVK1B**

- 4 Way 3 Position for single and double acting applications
- Tandem centre
- Built in pilot check valves for load holding
- Suits electric pump series PEDS026, PEDS075, PEDS090 & PEDS180



**DVK1B**

**SPECIFICATIONS**

**MANUAL VALVES**

Model	Mount type	Valve Function	Weight (kg)
DVBB	Pump	2 Way 2 Position	1.7
DVE1B	Pump	4 Way 3 Position	2.4
DVE1C	In line	4 Way 3 Position	2.7
DVE2B	Pump	4 Way 3 Position	2.1
DVF1B	Pump	4 Way 3 Position	3.3
DVF1C	In line	4 way 3 Position	3.6

**SOLENOID VALVES**

Model	Valve Function	Weight (kg)
DVGB	2 Way 2 Position	4.0
DVK1B	4 Way 3 Position	4.5