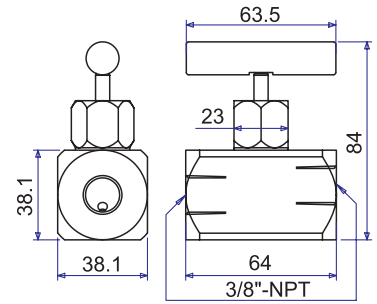
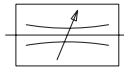


SHUT OFF VALVES

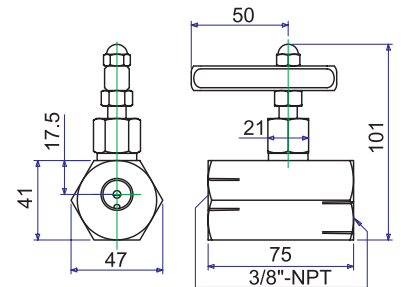
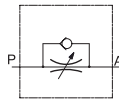
MODEL: NV6

- Used for normal flow control
- Can be used as a shut off valve
- Maximum working pressure : 10,000 psi / 700 Bar
- 1/4 NPT needle valve available on request (NV4)



MODEL: NV6F

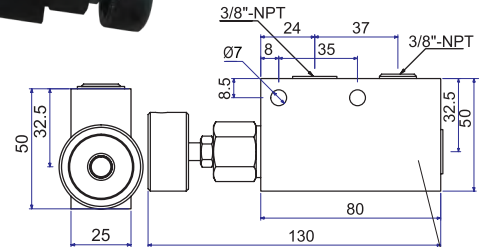
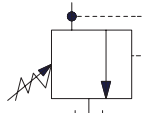
- Used for precise metering of flow
- Bypass flow control in return direction
- Temporary shut off only
- Maximum working pressure : 10,000 psi / 700 Bar



PRESSURE RELIEF VALVES

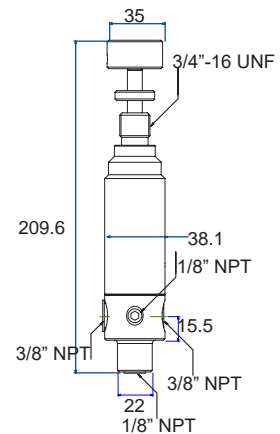
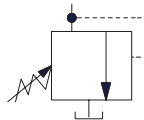
MODEL: PRV1C

- Inline pressure relief valve
- Adjustable from 7 - 700 bar
- Built in pressure relief valve
- Maximum working pressure : 10,000 psi / 700 Bar



MODEL: PRV2C

- Inline pressure regulator valve
- Adjustable from 7 - 700 bar
- Built in pressure relief valve
- Maximum working pressure : 10,000 psi / 700 Bar



SPECIFICATIONS

SHUT OFF VALVES

Model	Weight (kg)
NV6	0.8
NV6F	0.8

PRESSURE RELIEF VALVES

Model	Weight (kg)
PRV1C	0.8
PRV2C	0.8