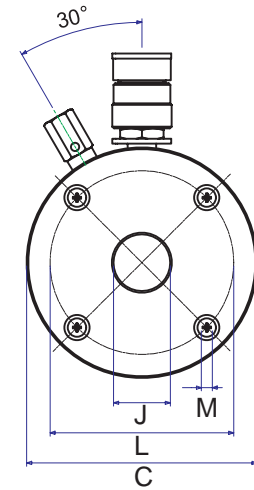
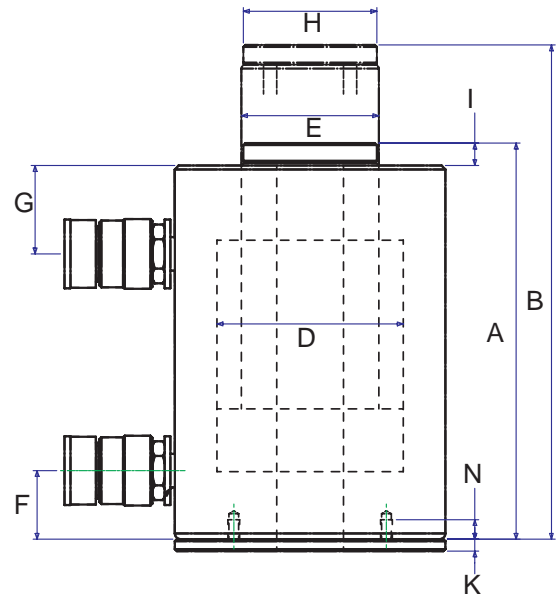




Meets or  
exceeds  
ASME B30.1



## MODEL: CHAD-SERIES

- Double Acting
- Capacity : 10 - 100 Ton
- Stroke : 250mm - 470mm
- Maximum working pressure : 10,000 psi / 700 Bar

## FEATURES

- Perfect for construction, ship yards, utilities, mining and equipment maintenance
- Hard anodised coating reduces wear and corrosion
- Rod wiper protects cylinder against contamination
- Cylinder bore is roller burnished
- Retract relief valve installed to prevent over pressurisation

## SPECIFICATIONS

Base Plate Mounting Hole Dimensions

Model series	L (mm)	M (mm)	N (mm)
CHAD30	110	M6 x 1.0	10
CHAD60	160	M6 x 1.0	10

Model	Cap. Ton Push / Pull	Stroke (mm)	Oil Cap. (cc) Push / Pull	A Retracted Height (mm)	B Extended Height (mm)	Ø C (mm)	Ø D (mm)	Ø E (mm)	F (mm)	G (mm)	Ø H (mm)	I (mm)	J Centre Hole Ø (mm)	K (mm)	Weight (kg)
CHAD302	38.5/22.7	50	275/162	202	252	138	95	70	35	45	68	11.5	34	6	9.6
CHAD306	38.5/22.7	150	825/486	327	477	138	95	70	35	45	68	11.5	34	6	14.8
CHAD3010	38.5/22.7	250	1374/810	430	680	138	95	70	35	45	68	11.5	34	6	16
CHAD602	62.6/31	50	448/221	250	300	200	125	100	50	50	89	14	54	6	15.5
CHAD606	62.6/31	150	1342/662	350	500	200	125	100	50	50	89	14	54	6	23
CHD6010	62.6/31	250	2237/1104	433	683	200	125	100	50	50	89	14	54	6	30.5