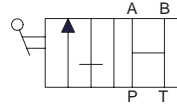


**MANUAL VALVES**

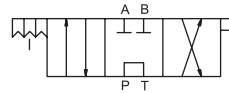
**Model: DVBB**

- 2 Way 2 position for single acting applications
- Suit pump series PE028 & PE180



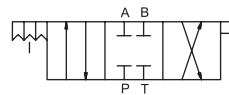
**Model: DVE1B**

- 4 Way 3 position for single and double acting applications
- Tandem centre
- Suit pump series PED028 & PED180
- For PHD2350 use model **DVE1A**



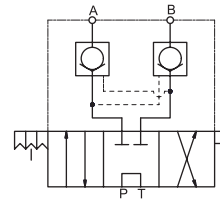
**Model: DVE2B**

- 4 Way 3 position for single and double acting applications
- Closed centre
- Suit pump series PED028 & PED180



**Model: DVF1B**

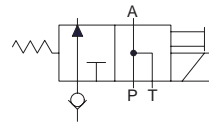
- 4 Way 3 position for single and double acting applications
- Tandem centre
- Built in pilot check valves for load holding
- Suit pump series PED028 & PED180



**SOLENOID VALVES**

**Model: DVGB**

- 2 Way 2 position for single acting applications
- Suit pump series PES028 & PES180



**Model: DVK1B**

- 4 Way 3 position for single and double acting applications
- Tandem centre
- Built in pilot check valves for load holding
- Suit pump series PEDS028 & PEDS180

